

perfectly connected

wesview
INDUSTRIAL PARK



wesgroup



Wesview Industrial Park is perfectly positioned for you and your business.

Ideally located within greater Calgary's southeast industrial district in Rocky View County, Wesview Industrial Park provides a unique purchasing opportunity in an architecturally controlled 118-acre master-planned, limited-service development with strategic and convenient access to all major transportation routes.

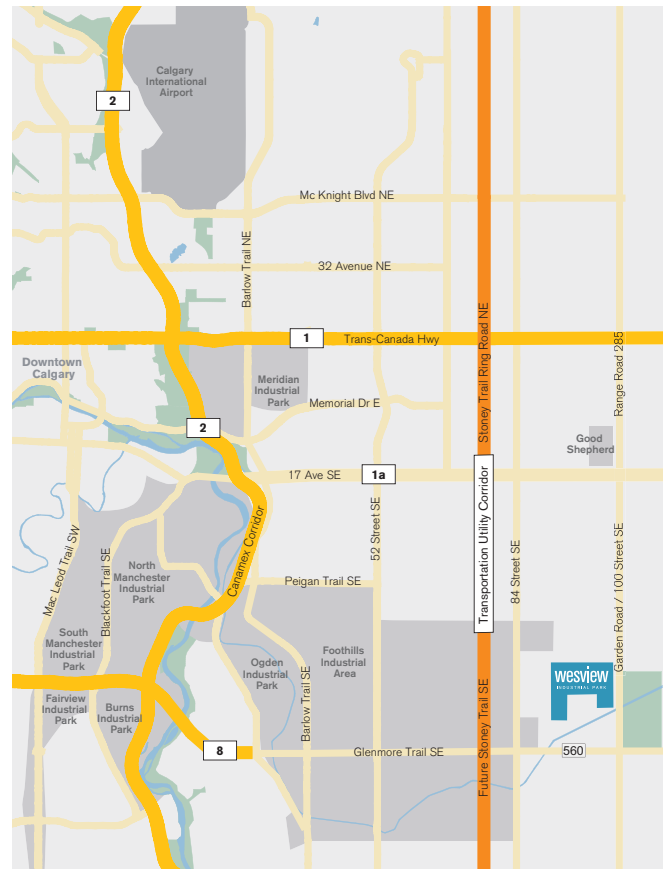


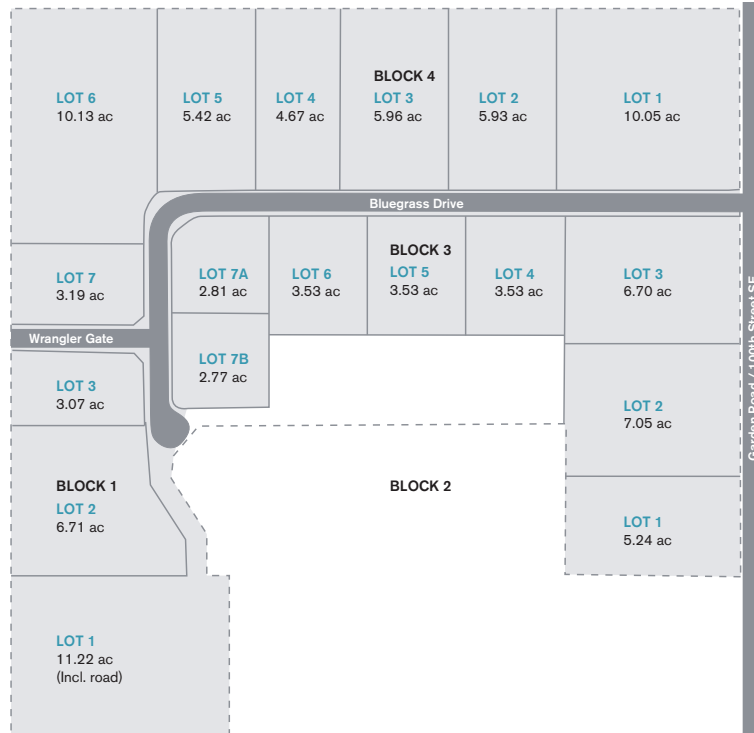
Key features include:

- Outstanding industrial location
- Superior access to transportation infrastructure
- A variety of lot sizes for development flexibility
- A comprehensive offsite stormwater management plan
- Flexible zoning including outside storage
- Property and business tax benefits
- Market leading pricing

Premier transportation and logistics support is provided through quick and convenient access to Calgary's entire transportation network. Major roadways include:

- TransCanada Highway (Hwy #1) linking Canada's East and West Coasts
- Highway #2 North to Edmonton and Fort McMurray
- CANAMEX Corridor (www.canamex.org), the north-south distribution and logistics roadway that links Alberta with the western United States and Mexico via Highway #2
- Convenient access to Calgary's Stoney Trail Ring Road
- Access to greater Calgary's Road Network via Glenmore Trail and Peigan Trail
- Approximately 20 minutes to downtown Calgary
- Approximately 35 minutes to the Calgary International Airport





Wesgroup Properties

Suite 2000 –
Four Bentall Centre
1055 Dunsmuir Street,
Vancouver, British Columbia
V7X 1L5

T 604 632 1727

F 604 632 1737

E info@wesgroup.ca

Wesgroup Properties is a family-owned real estate company that specializes in the development of commercial and industrial spaces.

In business for more than 50 years, we have grown to become one of Western Canada's largest private real estate companies, with significant land holdings currently under development and a property management portfolio of almost 2.3 million square feet in BC and Alberta.

For more information on Wesgroup Properties and our other developments, please visit our website at www.wesgroup.ca.

For all enquiries regarding Wesview Industrial Park, please contact:

Shawn Kenny

skenny@galwayrea.com

403.869.6643

www.wesview.ca

Developed by:

wesgroup

